

Child's Toque

(From "Fleisher's Knitting and Crocheting Manual, Ninth Edition, published 1910)



This cute hat has a turned back cuff for extra warmth. No size is given but fits a child and can be adapted to fit larger heads.

Materials:

Sport Weight yarn. My sample used Quince and Co. "Chickadee" yarn, 181 yards per skein. I used about a half skein.

Needles: US size 3

Size: finished piece measured about 16" around; my 2 year old granddaughter is modeling and the hat is a bit big on her.

Piece is worked flat, and seamed.

Instructions:

Cast on 105 stitches (or any number divisible by 5). Work 8 rows in garter stitch (k every row)

Border:

Written instructions:

Row 1 (RS): (P5, k5) repeat to last 5 sts, p5. (15 sts)

Row 2 (WS): K4, (p5, k5), repeat to last st, p1.

Rows 3 - 4: K2, (p5, k5), repeat to last 3 sts, p3.

Row 5: Repeat row 2.

Row 6: (K5, p5), repeat to last 5 sts, k5.

Row 7: P4, (k5, p5), repeat to last st, k1.

Rows 8 - 9: P2, (k5, p5), repeat to last 3 sts, k3.

Row 10: Repeat row 7.

Repeat Rows 1-10 once more. Work 6 rows in garter stitch.

P1 row, knit 6 rows.

Crown:

Row 1: (k2,p3),repeat to end.

Row 2: (k3,p2),repeat to end.

Row 3: p2,(k2,p3), repeat to last 3 sts,k2,p1.

Row 4: k1,p2,(k3,p2),repeat to last 2 sts,k2.

Repeat these 4 rows 10 times, then work 2 rows in stockinette (k right side, p wrong side)

Crown Decrease:

(worked in stockinette)

Row 1: (k10, ssk), repeat to last 9 sts, k9.

Row 2 and all wrong side rows: purl.

Row 3: (k9, ssk), repeat to last 9 sts, k9.

Row 5: (k8, ssk), repeat to last 9 sts, k9

Row 7: (k7, ssk), repeat to end.

Row 9: (k6, ssk), repeat to end.

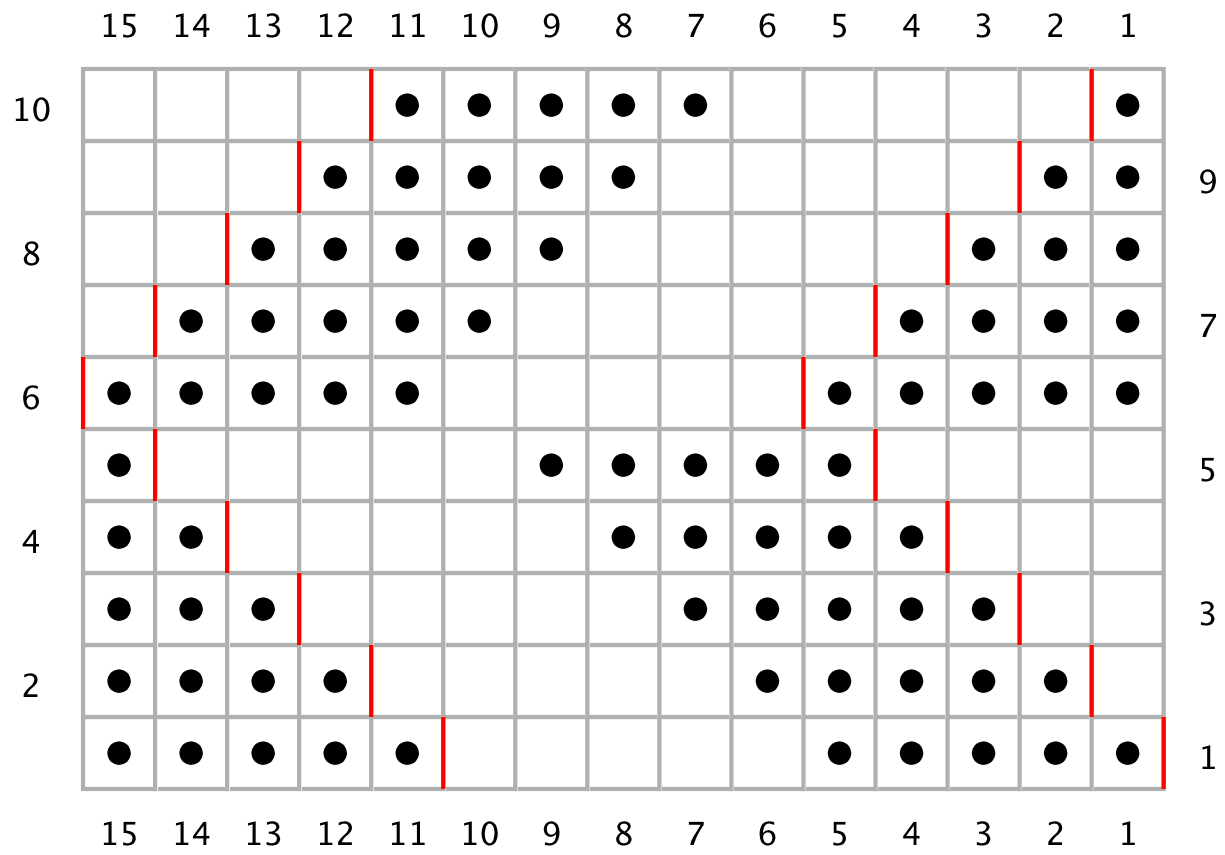
Row 11: (k5, ssk), repeat to end.
Row 13: (k4, ssk), repeat to end.
Row 15: (k3, ssk), repeat to end.
Row 17: (k2, ssk), repeat to end.
Row 19: (k1, ssk), repeat to end.
Row 21: (ssk), repeat to end.
Row 22: purl.



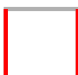
Break yarn, thread through sewing needle and pass needle through all stitches. Pull up snugly and secure. Sew up the seam. Add pompom if desired.



Toque Border

Key



-  RS: purl
WS: knit
-  RS: knit
WS: purl
-  Rep. between lines